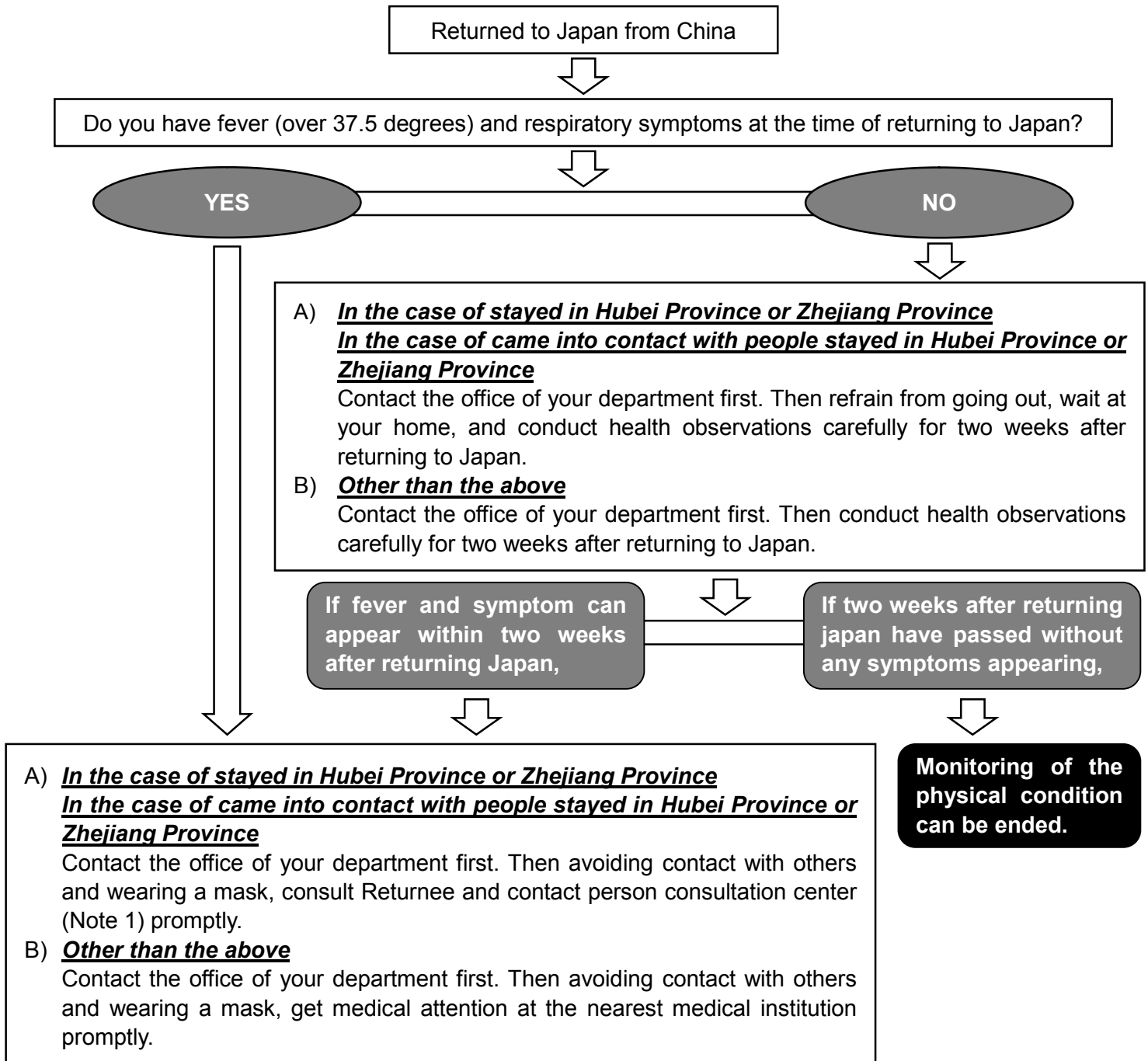


This page is translated by a machine translation system. Note that the machine translation system doesn't guarantee 100% correctness. Some proper nouns might not be translated correctly.

(reference)

Flow chart for members (Students / Faculty and staff) returning from China

※This flow chart is based on the latest information as of February 13, and may change in the future if new information is entered or the situation changes.



Note1 Returnee and contact person consultation center for Novel Coronavirus | website of the MHLW

https://www.mhlw.go.jp/stf/seisakunitsuite/bunya/kenkou_iryuu/covid19-kikokusyasessyokusya.html

Till the center is established; the nearest public health center.

Public health center jurisdiction guidance | website of the MHLW (in Japanese)

https://www.mhlw.go.jp/stf/seisakunitsuite/bunya/kenkou_iryuu/kenkou/hokenjo/